

# PETER / LACKE



## CONSUMER PACKAGING **ONE STOP SHOP**

FOR DECORATION ON

- GLASS
- RIGID PLASTIC
- FLEXIBLE PLASTIC
- FLEXIBLE TUBES
- ALUMINIUM CAPS

WATERBORNE COATINGS  
UHS-UV COATINGS  
SOLVENTBORNE COATINGS

# PETER/LACKE – YOUR TRUSTED PARTNER AND „ONE STOP SHOP“ IN CONSUMER PACKAGING

FOR DECORATION ON

- GLASS
- RIGID PLASTIC
- FLEXIBLE PLASTIC
- FLEXIBLE TUBES
- ALUMINIUM CAPS



With our sustainable and environmentally friendly processes and coating solutions, we solve your today's issues and work on your future challenges.

Think global and act local.  
Services all over the world.

# PRODUCT-PORTFOLIO / TECHNOLOGIES



## WATERBORNE COATINGS

PETER/LACKE waterborne coatings are meeting the highest specifications in the consumer packaging market and cover a wide range of technologies and substrates. 1K-, 2K- & Highbake Primers, Basecoats, Clearcoats, and Monocoats on glass, plastic and other relevant substrates.

## UV COATINGS

As a pioneer in environmentally friendly and sustainable UV coatings, PETER/LACKE has extended the product portfolio to innovative and highly efficient 100% solid UV-Systems as well as waterborne UV Technology.



## SOLVENTBORNE COATINGS

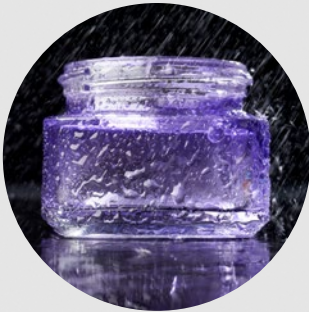
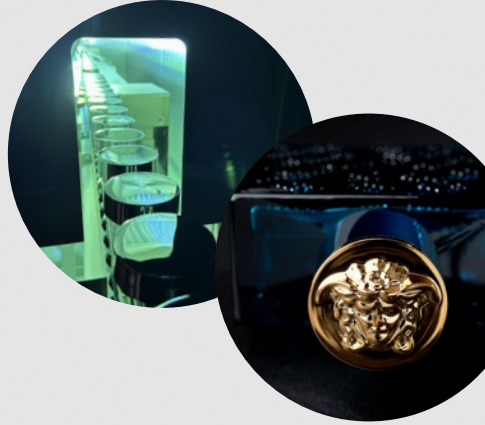
To reduce Carbon Footprint and increase properties, PETER/LACKE is working on bio-based as well as fast curing solvent-borne product cycles or combines solvent-based coatings with UV-Technology. 1K-, 2K- Primer as well as Clear- & Mono-coats, incl. Liquid Chrome technology.



# INNOVATION

## 100% SOLID UV TECHNOLOGY

For cosmetic and beverage container finishes with no or nearly no solvent also in combination with PVD or Metallization. Sustainable luxurious beauty in perfection.

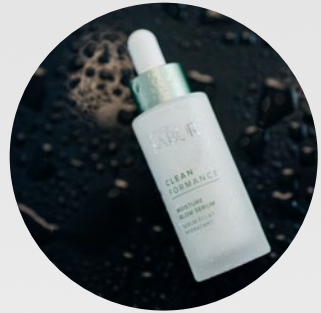


## GLASS ON GLASS TECHNOLOGY

High scratch resistance for your parts during transport without the need of extra protection.

## ACID ETCH REPLACEMENT

Sustainable ultramat coating replacement for acid etching of glass tactility and gloss with the same appearance as acid etched glass. It meets the requirements of major glass manufacturers.



## LIQUID CHROME TECHNOLOGY

A good and proven solution for parts which should look premium in metallic aspect and should or could not be metallized. A wide range of colors and gloss levels is available.

# WORLDWIDE

Not only do we understand the language of our customers, we also speak in those languages.

## LOCATIONS EUROPE



HIDDENHAUSEN  
GERMANY



SZÉKESFEHÉRVÁR  
HUNGARY



WROCLAW  
POLAND



MARCHTRENK  
AUSTRIA



ISTANBUL  
TÜRKIYE



SETUBAL  
PORTUGAL

## LOCATIONS AMERICAS



TROY  
USA/MI



VISTA  
USA/CA



QUERÉTARO  
MEXICO

## LOCATIONS ASIA



SHANGHAI  
CHINA



NAVI MUMBAI  
INDIA



TAN UYEN CITY  
VIETNAM

# CONTACT

## THOMAS STEINBINDER

BUSINESS UNIT MANAGER CONSUMER PACKAGING

[thomas.steinbinder@peter-lacke.com](mailto:thomas.steinbinder@peter-lacke.com)



## THERESA VAN VERSEVELD

KEY ACCOUNT MANAGER CONSUMER PACKAGING

[theresa.vanverseveld@peter-lacke.com](mailto:theresa.vanverseveld@peter-lacke.com)



## DANIEL TOCHA

GLOBAL BUSINESS DEVELOPMENT MANAGER

CONSUMER PACKAGING

[daniel.tocha@peter-lacke.com](mailto:daniel.tocha@peter-lacke.com)



[WWW.PETER-LACKE.COM](http://WWW.PETER-LACKE.COM)

## NOTES

YOUR GLOBAL COATING SUPPLIER FOR



AUTOMOTIVE



LIFESTYLE



CONSUMER PACKAGING



AVIATION